

Newsletter

KANSAS SOCIETY OF PROFESSIONAL ENGINEERS

SMOKY VALLEY CHAPTER



November 2021

NATIONAL SOCIETY OF PROFESSIONAL ENGINEERS

This month's Newsletter is sponsored by:



Chapter Mission:

To promote, recognize and enhance the engineering profession by delivering professional development products and services, encouraging licensure, and advocating legislation and public policy for the betterment of human welfare and the profession.

2020 - 2021 Chapter Officers

| | |
|--------------------------|-----------------|
| President: | Kris Upson |
| Vice President: | Rex Ritter |
| Secretary: | Libby Lorenson |
| Treasurer: | Brett Wilkinson |
| Chapter Director: | Jacob Allen |
| Past President: | Jarred Green |
| State Director: | Karla Waters |



Sounding Board

The Smoky Valley Chapter monthly newsletter is a great place to inform members of general news, ideas, and events that are of interest to the society. Anyone that has newsletter material they would like to share with the society should feel free to submit the information to Chapter Director Libby Lorenson throughout the upcoming year. Submittals not later than the first of each month are needed to ensure insertion in the current monthly newsletter.

Mark Your Calendars

SMOKY VALLEY CHAPTER NOVEMBER MEETING

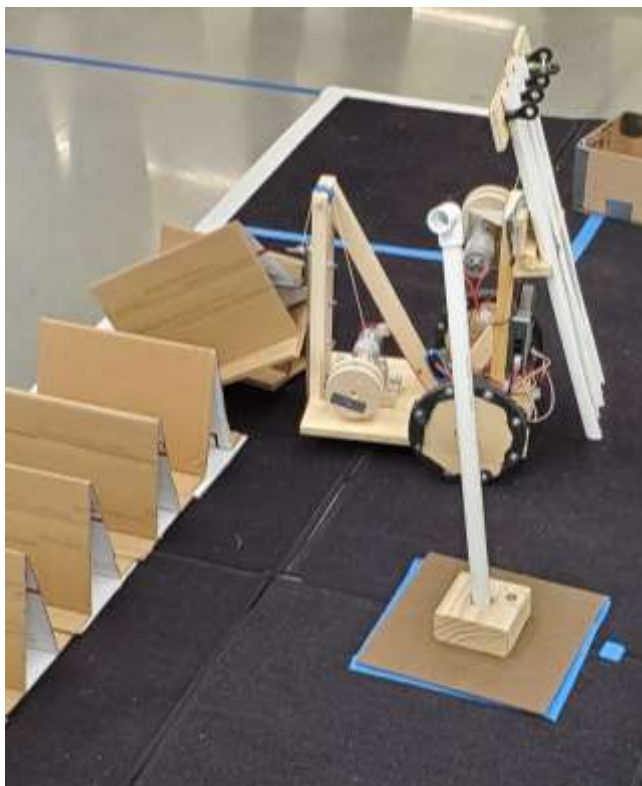
- **Industry Tour – McPherson Concrete Precast Plant**
- **November 16, 11:00 am**
- **Plant tour and presentation from American Concrete Pipe Association Engineer**

SMOKY VALLEY CHAPTER DECEMBER MEETING

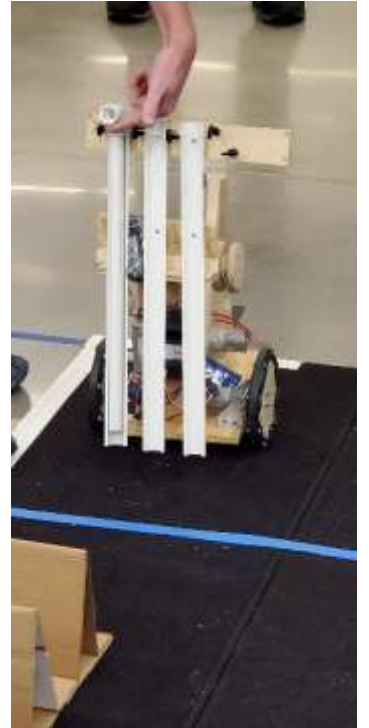
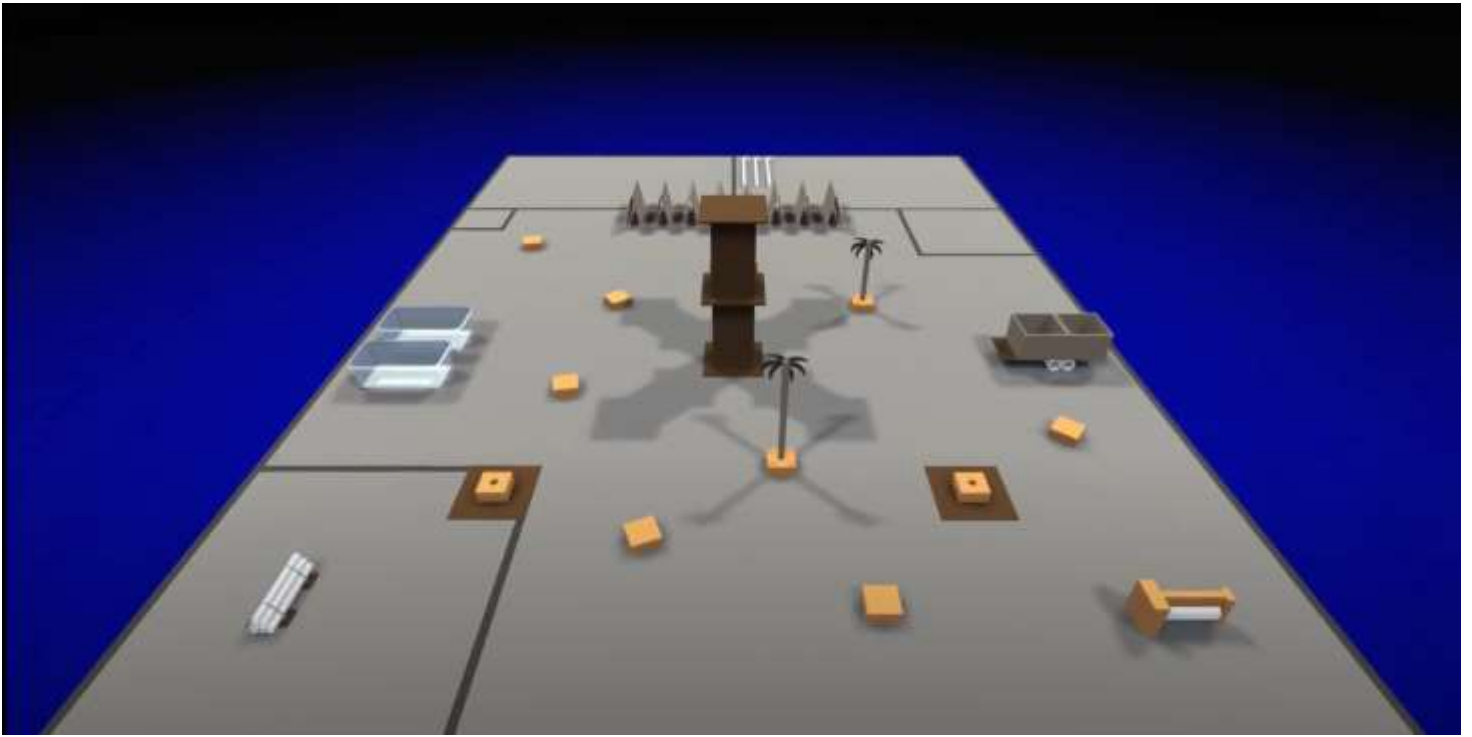
- **Legislative Session**
- **KSPE President Visit to Smoky Valley Chapter**
- **December 2, 2021**
- **More details to come**

Smoky Valley Chapter October 2021 Meeting

Smoky Valley Chapter members attended the October chapter meeting hosted by Salina South High's Robotic Team. Six team members and coaches Mrs. Lyric Cairns (Former KSPE SVC Teacher of the Year) and Mr. Adam Lesser presented the robot they are currently working on for the 2021 BEST (Boosting Engineering Robotics Competition) Robotics Competition. After presenting their robot the students ate dinner with Smoky Valley Chapter members. This year's competition scenario is "Demo Daze", where teams are tasked with managing a demolition site with their robot. All teams are given, free of charge, the same sets of supplies and have 8 weeks to strategize, problem solve and build the robot. The students will be competing against 20+ teams throughout Kansas for a chance to move on to the regional competition in Denver. We want to wish the Salina South High Robotics Team the best of luck at their competition on November 20 at Charles Koch Arena!



October Meeting



SMOKY VALLEY CHAPTER

2021-2022 Committees

Chapter committees are currently being filled. If you wish to serve on a committee, please contact President Justin Owens

Call for KSPE Award Nominations

The awards committee is accepting award nominations for outstanding achievements in the engineering profession. Categories include **Engineer of the Year, KSPE Award, Outstanding Citizen, Outstanding Engineering Achievement, Outstanding Engineering Intern, Outstanding Teacher, Outstanding Young Engineer, Government Engineer, and Professional Development Award**. Award nomination forms and selection criteria can be found on the KSPE website at <http://www.kansasengineer.org>.

There are many outstanding professionals in the Smoky Valley Chapter. Awards will be presented to the most deserving candidate nominated. If no nominations are received, however, no award will be presented. We challenge each member to nominate at least one candidate for an award. Nominations are due in January, and may be sent to Jacob Allen at jacob.allen@wilsonco.com; or to any other chapter officer.

Recruits...

If you know any prospective members, invite them to a chapter meeting. A membership application is available at the KSPE website at www.kansasengineer.org.



Webinar will be held via Zoom from 9:00am - 11:00am on March 2 and March 3
4 PDHs available

Full schedule will be available soon.

FEB
20-26

Engineers Week 2022

February 20-26, 2022

JUNE
15-17

2022 KSPE Annual Conference

Drury Plaza Hotel Broadview, Wichita

June 15-17, 2022

This Month's Sponsor



WHOLE-POND SEEPAGE TESTING

Our staff is trained to perform permeability tests using technology developed by Dr. Jay Ham of Kansas State University.

This method is preferred by KDHE. It is more accurate than stand-pipe and soil-core testing, does not require ponds to be drained, and does not damage liners.

You may need seepage testing to complete these tasks:

- Fulfill facility permit requirements
- Protect sensitive groundwater areas
- Document newly constructed ponds

ABOUT OUR COMPANY

KLA Environmental Services, Inc. was formed in April 2001 by the Kansas Livestock Association to help livestock producers comply with the growing number of environmental regulations.

We offer total project management through our agronomy, engineering, and compliance divisions. Our knowledgeable staff has extensive experience with government regulatory agencies. By working with us, you eliminate the need for having regulatory expertise on staff and can spend more time conducting business.

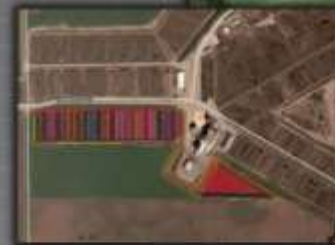


Call us to learn more about how KLA Environmental Services, Inc. can help your facility.

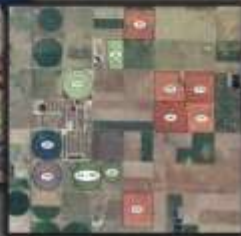
1303 YUCCA ST.
SCOTT CITY, KS 67871

1700 E. IRON AVE.
SALINA, KS 67401

T 785.823.0097
F 913.273.1493



OPTIMIZE YOUR NATURAL RESOURCES



ENGINEERING SERVICES

Most projects require some form of engineering services. Whether it be planning a new facility, developing a grading plan for an expansion project, or evaluating the capacity of an existing waste management



system, our team of engineers and technicians has the experience and tools to get the job done. Our licensed professional engineers focus on the agricultural, civil and environmental applications of engineering, including an emphasis on water resources. We perform all the components needed to

implement a project, such as GPS-based surveying, soil and geologic investigation, computer-aided design and drafting, completion of permit applications, and construction observation and testing services.



Our engineering staff includes certified Technical Service Providers, which allows us to help our clients complete projects funded through USDA programs such as the Environmental Quality Incentives Program (EQIP).



AGRONOMIC CONSULTING

Our team of agronomists has developed over 50 KDHE-approved Nutrient Management Plans. The staff qualifications include: Certified Crop Advisor, Certified Professional Agronomist, and Associate Professional Soil Scientists.

With extensive knowledge and engineering support, we can assist you with implementation of the following:

- Nutrient Management Plans for CAFOs
- Land Application Plans for Industrial Facilities
- Water Right Development
- Soil and Waste Sampling
- Variable Rate Irrigation Design & Installation
- Manure and Mortality Composting

PROACTIVE COMPLIANCE PROGRAMS

We limit your regulatory liability by proactively identifying regulatory concerns, preventing unintended errors, and actively engaging third-party experts. Our recordkeeping system is web-based and can be accessible from any location. Plus it is user friendly! We develop individualized programs including these components:

- Review compliance records for accuracy and completeness
- Perform annual on-site assessments
- Complete permit renewals
- Manage irrigation and stockwater use reports
- Assist with manure marketing
- Answer general compliance questions
- Assist with manure marketing
- Perform soil and waste sampling



1303 YUCCA ST.
SCOTT CITY, KS 67871

1700 E. IRON AVE.
SALINA, KS 67401

T 785.823.0097
F 785.823.3724

WWW.KLAENVIRO.COM